

# MK Weldheads

## CopperHead™ / Mr. Micro™

### Robust Solutions for Orbital Weld Applications

**CopperHeads™** are ideal cost savers for Sanitary & High Pressure Tube Systems.

The **CopperHead™** series are our most cost effective and rugged in-place orbital weldheads offered in three models. The **CopperHead™** models 5001 (1/8-1 inch OD), 5002 (1/4-2 inch OD) & 5003 (1/2-3 inch OD) each offer versatility and high-output production rates. Each **CopperHead™** is rated at 150 amps pulsed.

The water-cooled, narrow profile weldheads are lightweight and easy to handle for those awkward welds with limited access.

**Mr. Micro™** is a robust heavy-duty water-cooled tube and miniature fitting in-place orbital weldhead for high-purity tube systems.

The precision 1/8"-3/4" tube OD & miniature weld fitting collets, tool mounting side plates and clamping jaws are made of tool steel, nickel plated and each hardened for wear and toughness.

The high-output model 5000 **Mr. Micro™** is rated at 100 Amps pulsed with production rates unequalled by other micro weldheads.



SALES AND TECHNICAL/WELDING SUPPORT PROVIDED BY:

**Pro-Fusion Technologies, Inc.**

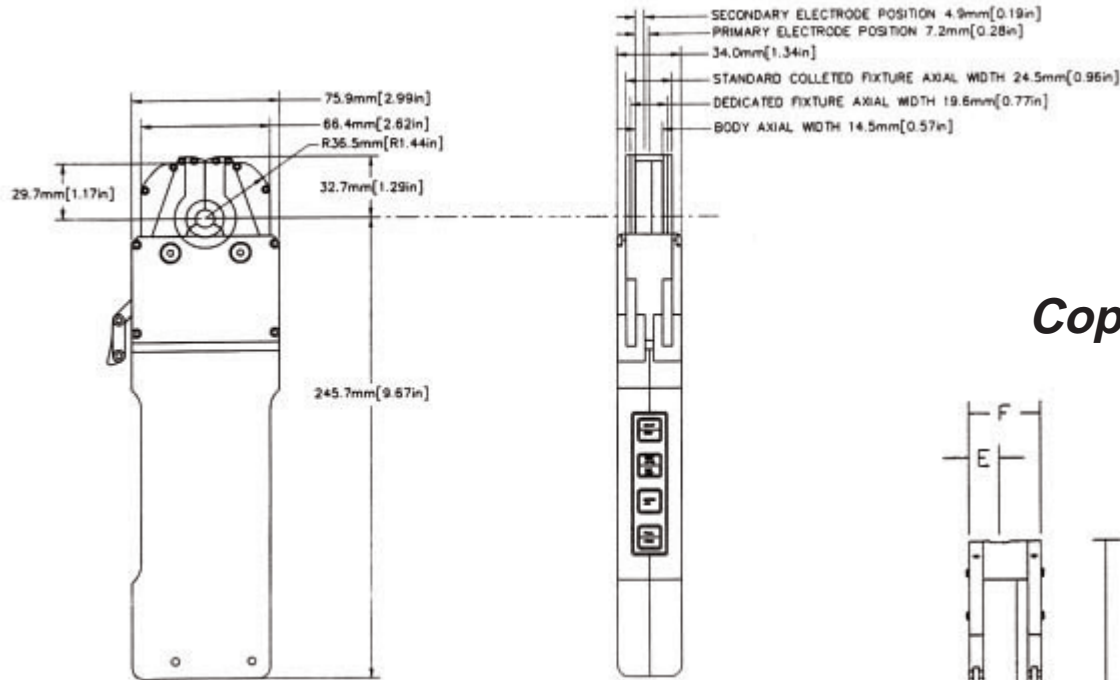
Tel: (805) 376-8021 Fax: (805) 376-0619

Web Site: [www.pro-fusiononline.com](http://www.pro-fusiononline.com)

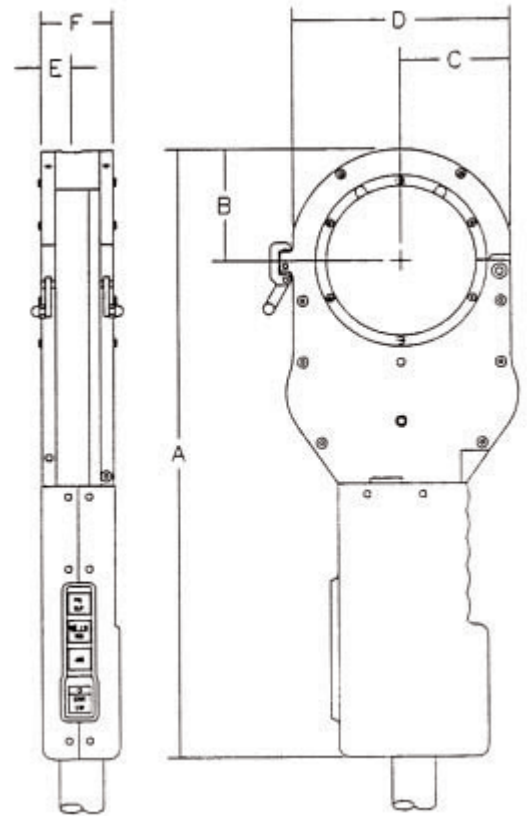
### FEATURES AT A GLANCE

- **Narrow Profile / Water Cooled**
- **Quality Rugged Construction**
- **From 1/8" to 4-1/2" Tube OD's**
- **Weld Controls build into Handle**
- **CopperHead™ 150 Amps Pulsed**
- **Mr. Micro™ 100 Amps Pulsed**

# Mr. Micro™ Specifications



## CopperHead™



### MK Weldhead Specifications

Dimensions References	A	B	C	D	E	F
Model 5001, CopperHead I	11.5"	1.5"	1.48"	2.96"	0.67"	1.62"
Model 5002, CopperHead II	13.2"	2.2"	2.05"	4.1"	0.67"	1.62"
Model 5003, CopperHead III	14.18"	2.62"	2.54"	5.08"	0.67"	1.62"
Model 6004, Weldhead & Cartridge	17.71"	4.11"	4.05"	8.04"	0.73"	1.76"

### How To Order

#### WELDHEADS & GENERIC WELDHEAD COLLETS

Contact MK Products or refer to your MK Parts Price List for specific tube size collet part numbers.  
Provide weld-fitting manufacturers name & part number for weld fitting collets & special tooling

Weldhead Model	Flush Collet P/N	Extended Collet P/N	Weldhead OD Range	Specification
5000, Mr. Micro	623-4000, Specify Tube OD	624-4000, Specify Tube OD	1/8 - 3/4" inch	100 amps, pulsed Water Cooled
5001, CopperHead I	623-0110, Specify Tube OD	624-0110, Specify Tube OD	1/8 - 1 inch	150 amps, pulsed Water Cooled
5002, CopperHead II	623-0210, Specify Tube OD	624-0210, Specify Tube OD	1/4 - 2 inch	150 amps, pulsed Water Cooled
5003, CopperHead III	623-0310, Specify Tube OD	624-0310, Specify Tube OD	1/2 - 3 inch	150 amps, pulsed Water Cooled
6004, Weldhead & Cartridge	623-0410, Specify Tube OD	624-0410, Specify Tube OD	1 - 4 1/2 inch	150 amps, pulsed Water Cooled

Note: Model 5000 weldhead collet sets are defined as three 120° segments.  
Model 5001 - 5003 and model 6004 weldhead collet sets are defined as top and bottom halves.  
Typically two sets of collets are required for each weldhead, per tube Diameter.